

M- HC7 ( 2 000 )



miniBOOSTER M- HC7

M- HC7 ( 20 200 ), 2 /  
 2000  
 M- HC7 10  
 10 , M- HC7  
 M- HC7  
 : M- HC7 15 /  
 . M- HC7 4",  
 1%.

- 1
  - 1
  - 1
  - 1 4/3
  - 1
  - 1
  - 1
  - 1
  - 1
  - 1
- HC7 miniBOOSTER  
 10  
 0 - 2000

IN, M, P1 T: 1/4" BSPP  
 : H 1/4" BSPP 120°

M- HC7

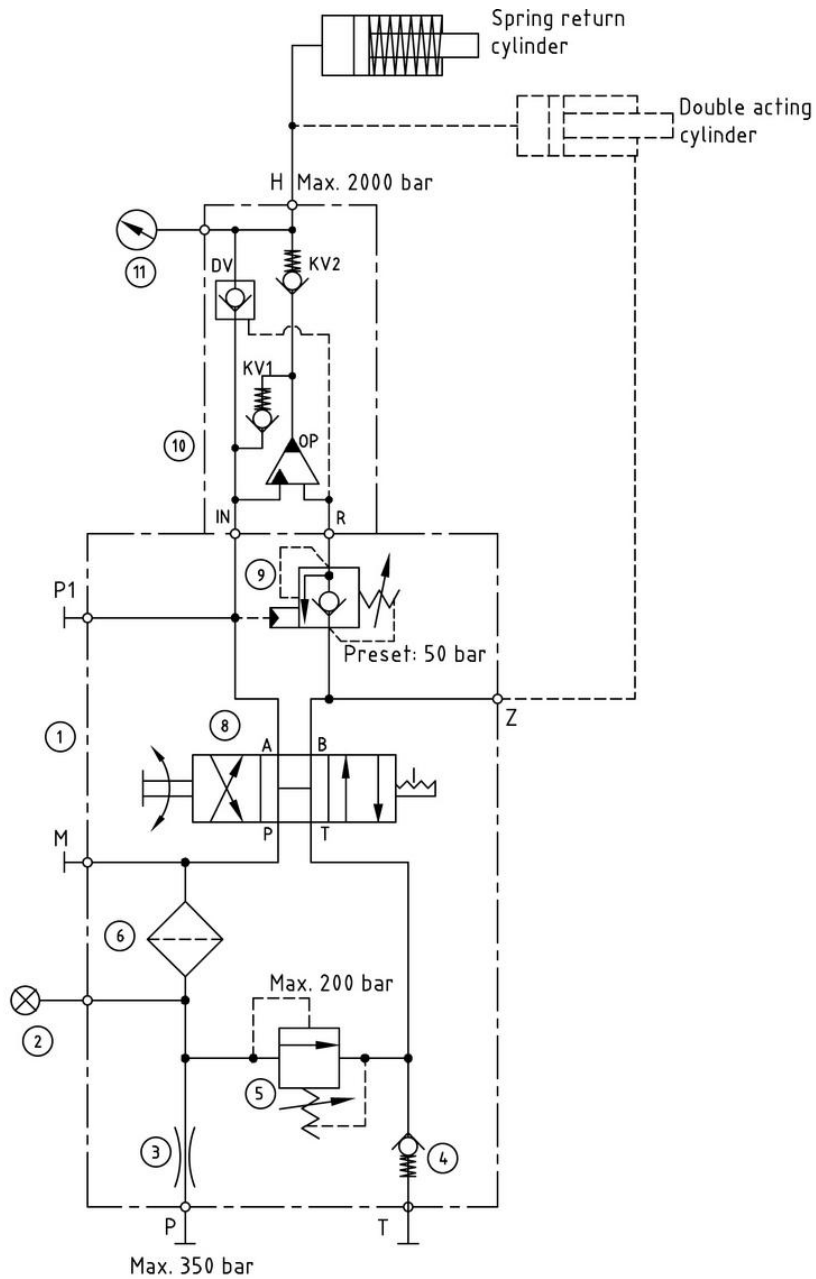
PP-805 (

FIL- NG6- CIE

PA-9F400- S (

0 - 250

**M- HC7-001**

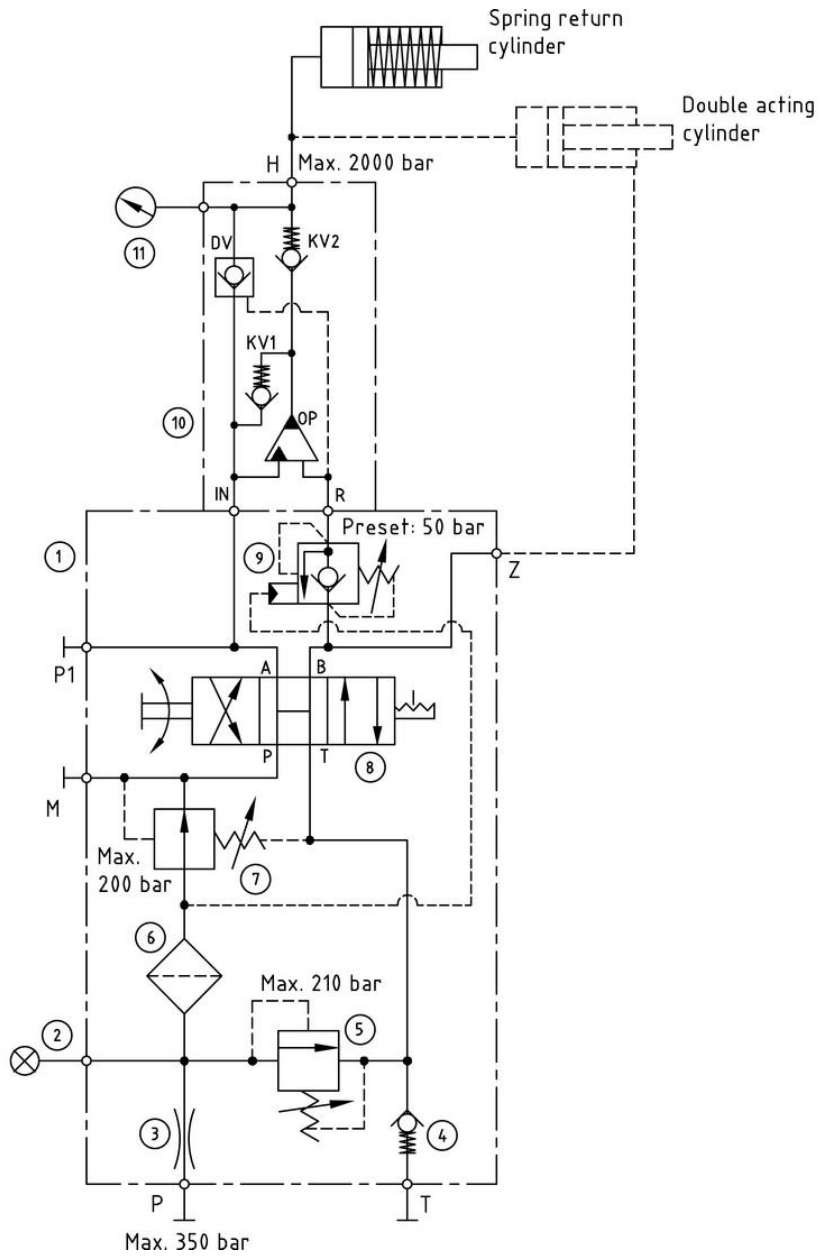


Dimension drawing: PP-120

0-265 Model / Issue 05 -

200

M- HC7-101



0-266 Model / Issue 03 -

## miniBOOSTER M- HC7

M- HC7-001	6.6/9.0/13.0/20.0	B = ( )	12
M- HC7-101	6.6/9.0/13.0/20.0		13

## miniBOOSTER M- HC7

M- HC7 2000  
HC7 i = 13,0, H1 M22 x 1,5 H2 19/16-18 UNF,  
DV BSPP: HC7 - 13.0 - B - 12  
HC7.

**M- HC7-101 – 13,0 – B – 12**