



# 107 SERIES PSM

DIN2353 Threads  
DIN2353 Bulkhead  
DIN3852 BSP/NPTF/ORB

Manufactured according to ISO 7241-A and ISO 5675 norms.  
Poppet Valve or Ball closing system.  
DIN2353 threads. Other threads available upon request.

## • Materials

Carbon Steel EN -10277-3  
Seals: NBR  
Back-Up-Ring: PTFE  
Balls: AISI 1010/1015  
Springs: Carbon Steel  
DIN 17233/84(B)

## • Working temperature (Seals)

|   | NBR    | Viton  | EPDM   |
|---|--------|--------|--------|
| + | +100°C | +200°C | +150°C |
| - | -30°C  | -10°C  | -40°C  |

• **Applications:** Designed for Oil hydraulic Applications according to European Directive 97.23.EC

• **Sectors:** Industrial, Agricultural

## • Equivalence

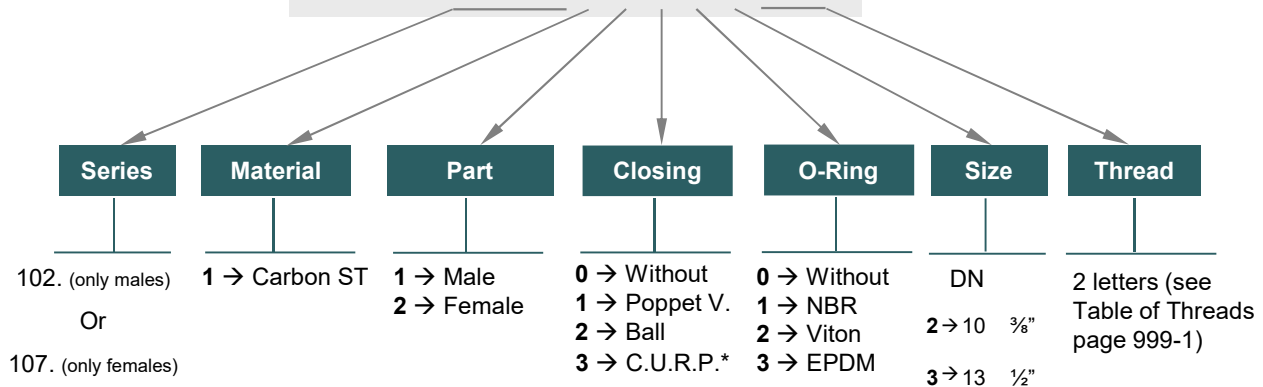
FASTER PV 9  
CPV  
ARGUS SVK  
PARKER 4200



## MODEL STRUCTURE

Example:

# 107.12113 KF



\* DN13 available only.

## 107-1

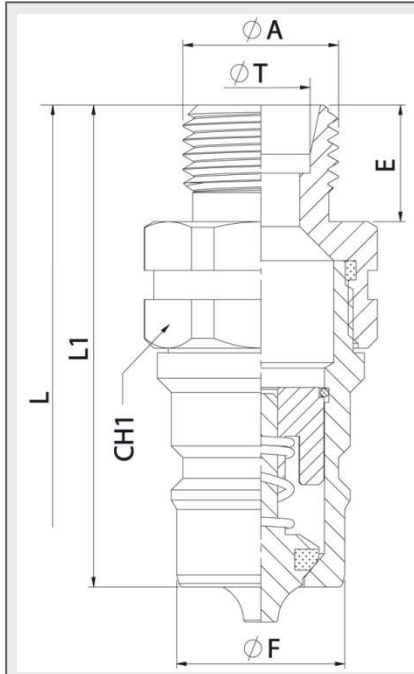




# 107 SERIES

## PSM

DIN2353  
Threads

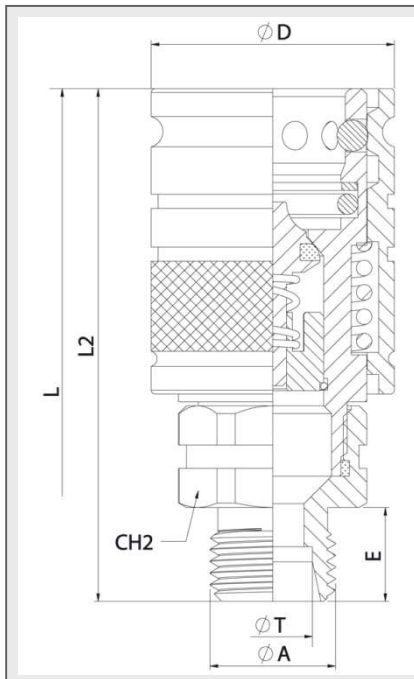


| MALE |          |          |       |                  |          |
|------|----------|----------|-------|------------------|----------|
| DN   | CH1      | L1       | ØF    | L                | E        |
| 10   | 22       | 49,57    | 17,30 | 97,07            | 12       |
| 13   | 27<br>30 | 56<br>79 | 20,56 | 105,80<br>151,80 | 12<br>35 |

\* DN10 MALE drawing

### STANDARD MALE MODELS

| DN      | ØA      | ØT          | REF.        |             |
|---------|---------|-------------|-------------|-------------|
| 10      | M12x1,5 | 6L          | 102.11112JB | 270Bar      |
|         | M14x1,5 | 8L          | 102.11112JC |             |
|         | M16x1,5 | 10L         | 102.11112JD |             |
|         | M18x1,5 | 12L         | 102.11112JE |             |
|         | M16x1,5 | 8S          | 102.11112KD |             |
|         | M18x1,5 | 10S         | 102.11112KE |             |
|         | M20x1,5 | 12S         | 102.11112KF |             |
|         |         |             | 3/8" BSP    | 102.11112AN |
| 13      | M14x1,5 | 8L          | 102.11113JC | 250Bar      |
|         | M16x1,5 | 10L         | 102.11113JD |             |
|         | M18x1,5 | 12L         | 102.11113JE |             |
|         | M22x1,5 | 15L         | 102.11113JG |             |
|         | M26x1,5 | 18L         | 102.11113JI |             |
|         | M18x1,5 | 10S         | 102.11113KE |             |
|         | M20x1,5 | 12S         | 102.11113KF |             |
|         | M22x1,5 | 14S         | 102.11113KG |             |
| M24x1,5 | 16S     | 102.11113KH |             |             |
| M30x2   | 20S     | 102.11113KJ |             |             |



| FEMALE |          |                |       |                  |          |
|--------|----------|----------------|-------|------------------|----------|
| DN     | CH2      | L2             | ØD    | L                | E        |
| 10     | 22       | 65,50          | 31    | 97,07            | 12       |
| 13     | 27<br>30 | 71,80<br>94,80 | 37,80 | 105,80<br>151,80 | 12<br>35 |

\* DN10 FEMALE drawing

### STANDARD FEMALE MODELS

| DN      | ØA      | ØT          | REF.        |             |
|---------|---------|-------------|-------------|-------------|
| 10      | M12x1,5 | 6L          | 107.12112JB | 270Bar      |
|         | M14x1,5 | 8L          | 107.12112JC |             |
|         | M16x1,5 | 10L         | 107.12112JD |             |
|         | M18x1,5 | 12L         | 107.12112JE |             |
|         | M16x1,5 | 8S          | 107.12112KD |             |
|         | M18x1,5 | 10S         | 107.12112KE |             |
|         | M20x1,5 | 12S         | 107.12112KF |             |
|         |         |             | 3/8" BSP    | 107.12112AN |
| 13      | M14x1,5 | 8L          | 107.12113JC | 250Bar      |
|         | M16x1,5 | 10L         | 107.12113JD |             |
|         | M18x1,5 | 12L         | 107.12113JE |             |
|         | M22x1,5 | 15L         | 107.12113JG |             |
|         | M26x1,5 | 18L         | 107.12113JI |             |
|         | M18x1,5 | 10S         | 107.12113KE |             |
|         | M20x1,5 | 12S         | 107.12113KF |             |
|         | M22x1,5 | 14S         | 107.12113KG |             |
| M24x1,5 | 16S     | 107.12113KH |             |             |
| M30x2   | 20S     | 107.12113KJ |             |             |



# 107 SERIES

## PSM

DIN2353  
Bulkhead



| MALE |     |     |       |       |        |        |
|------|-----|-----|-------|-------|--------|--------|
| DN   | CH1 | CH2 | L1    | ØD    | L      |        |
| 10   | 22  | 19  | 71,57 | 17,30 | 141,07 |        |
|      |     | 24  |       |       |        |        |
|      |     | 24  |       |       |        |        |
|      | 13  | 27  | 19    | 78    | 20,56  | 149,80 |
|      |     |     | 30    | 79    |        | 151,80 |
|      |     |     | 24    | 68    |        | 129,80 |
| 13   |     | 27  | 27    | 79    | 20,56  | 151,80 |
|      |     |     | 30    | 56    |        | 105,80 |
|      |     |     | 24    | 68    |        | 129,80 |
|      | 13  | 27  | 27    | 79    | 20,56  | 151,80 |
|      |     |     | 30    | 79    |        | 151,80 |
|      |     |     | 30    | 79    |        | 151,80 |
| 13   |     | 36  | 27    | 79    | 20,56  | 151,80 |
|      |     |     | 30    | 79    |        | 151,80 |

\* DN13 MALE drawing

| STANDARD MALE MODELS |         |     |             |
|----------------------|---------|-----|-------------|
| DN                   | ØA      | ØT  | REF.        |
| 10                   | M12x1,5 | 6L  | 102.11112LB |
|                      | M14x1,5 | 8L  | 102.11112LC |
|                      | M16x1,5 | 10L | 102.11112LD |
|                      | M18x1,5 | 12L | 102.11112LE |
|                      | M16x1,5 | 8S  | 102.11112MD |
|                      | M18x1,5 | 10S | 102.11112ME |
| 13                   | M20x1,5 | 12S | 102.11112MF |
|                      | M14x1,5 | 8L  | 102.11113LC |
|                      | M16x1,5 | 10L | 102.11113LD |
|                      | M18x1,5 | 12L | 102.11113LE |
|                      | M22x1,5 | 15L | 102.11113LG |
|                      | M26x1,5 | 18L | 102.11113LI |
|                      | M18x1,5 | 10S | 102.11113ME |
|                      | M20x1,5 | 12S | 102.11113MF |
|                      | M22x1,5 | 14S | 102.11113MG |
|                      | M24x1,5 | 16S | 102.11113MH |
|                      | M30x2   | 20S | 102.11113MJ |

| FEMALE |     |     |      |    |        |        |
|--------|-----|-----|------|----|--------|--------|
| DN     | CH2 | CH3 | L2   | ØD | L      |        |
| 10     | 22  | 19  | 87,5 | 31 | 141,07 |        |
|        |     | 22  |      |    |        |        |
|        |     | 24  |      |    |        |        |
|        | 13  | 27  | 19   | 78 | 37,80  | 149,80 |
|        |     |     | 30   | 79 |        | 151,80 |
|        |     |     | 24   | 68 |        | 129,80 |
| 13     |     | 27  | 27   | 79 | 37,80  | 151,80 |
|        |     |     | 30   | 56 |        | 105,80 |
|        |     |     | 24   | 68 |        | 129,80 |
|        | 13  | 27  | 27   | 79 | 37,80  | 151,80 |
|        |     |     | 30   | 79 |        | 151,80 |
|        |     |     | 30   | 79 |        | 151,80 |
| 13     |     | 36  | 27   | 79 | 37,80  | 151,80 |
|        |     |     | 30   | 79 |        | 151,80 |

\* DN13 FEMALE drawing

| STANDARD FEMALE MODELS |         |     |             |
|------------------------|---------|-----|-------------|
| DN                     | ØA      | ØT  | REF.        |
| 10                     | M12x1,5 | 6L  | 107.12112LB |
|                        | M14x1,5 | 8L  | 107.12112LC |
|                        | M16x1,5 | 10L | 107.12112LD |
|                        | M18x1,5 | 12L | 107.12112LE |
|                        | M16x1,5 | 8S  | 107.12112MD |
|                        | M18x1,5 | 10S | 107.12112ME |
| 13                     | M20x1,5 | 12S | 107.12112MF |
|                        | M14x1,5 | 8L  | 107.12113LC |
|                        | M16x1,5 | 10L | 107.12113LD |
|                        | M18x1,5 | 12L | 107.12113LE |
|                        | M22x1,5 | 15L | 107.12113LG |
|                        | M26x1,5 | 18L | 107.12113LI |
|                        | M18x1,5 | 10S | 107.12113ME |
|                        | M20x1,5 | 12S | 107.12113MF |
|                        | M22x1,5 | 14S | 107.12113MG |
|                        | M24x1,5 | 16S | 107.12113MH |
|                        | M30x2   | 20S | 107.12113MJ |

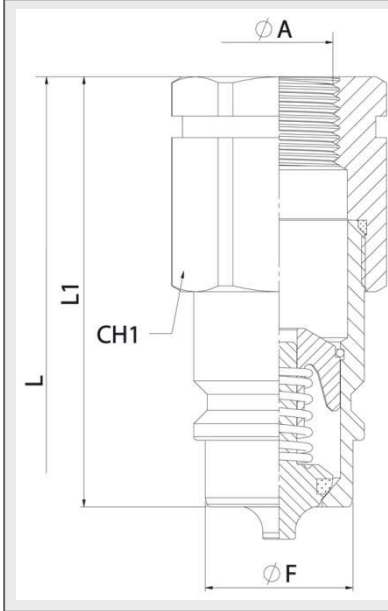




# 107 SERIES

## PSM

DIN 3852  
BSP/NPTF/ORB



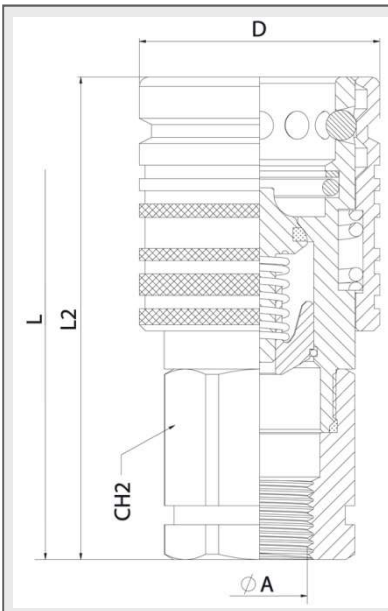
| MALE |               |     |       |       |        |
|------|---------------|-----|-------|-------|--------|
| DN   | ØA            | CH1 | L1    | ØF    | L      |
| 10   | 1/4" BSP      | 22  | 50,57 | 17,30 | 99,07  |
|      | 1/4" NPTF     | 22  |       |       |        |
|      | 3/8" BSP      | 22  |       |       |        |
|      | 3/8" NPTF     | 22  |       |       |        |
|      | M16x1,5       | 22  |       |       |        |
|      | M18x1,5       | 22  |       |       |        |
| 13   | 3/8" BSP      | 27  | 20,56 |       | 113,80 |
|      | 1/2" BSP      | 27  |       |       | 113,80 |
|      | 3/4" NPTF     | 30  |       |       | 117,80 |
|      | M14x1,5       | 27  |       |       | 113,80 |
|      | M16x1,5       | 27  |       |       | 113,80 |
|      | M18,1,5       | 27  |       |       | 113,80 |
|      | M22x1,5       | 27  |       |       | 117,80 |
|      | 3/4" -16ORB   | 27  |       |       | 113,80 |
|      | 7/8" -14ORB   | 27  |       |       | 113,80 |
|      | * 3/4" -16ORB | 27  |       |       | 67,20  |

\* DN13 MALE drawing

### STANDARD MALE MODELS

| DN | ØA            | REF.         |        |
|----|---------------|--------------|--------|
| 10 | 1/4" BSP      | 102.11112AB  | 270Bar |
|    | 1/4" NPTF     | 102.11112BB  |        |
|    | 3/8" BSP      | 102.11112AC  |        |
|    | 3/8" NPTF     | 102.11112BC  |        |
|    | M16x1,5       | 102.11112ND  |        |
|    | M18x1,5       | 102.11112NE  |        |
| 13 | 3/8" BSP      | 102.11113AC  | 250Bar |
|    | 1/2" BSP      | 102.11113AD  |        |
|    | 3/4" NPTF     | 102.11113BE  |        |
|    | M14x1,5       | 102.11113NC  |        |
|    | M16x1,5       | 102.11113ND  |        |
|    | M18x1,5       | 102.11113NE  |        |
|    | M22x1,5       | 102.11113NG  |        |
|    | 3/4" -16ORB   | 102.11113GF  |        |
|    | 7/8" -14ORB   | 102.11113GH  |        |
|    | * 3/4" -16ORB | 102.11113GFA |        |

\* This reference is habitually provided in the Spanish market, being the head cylindrical instead of 27mm hexagonal.



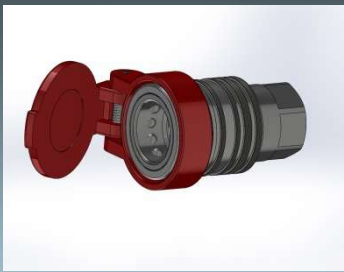
| FEMALE |               |     |       |    |        |
|--------|---------------|-----|-------|----|--------|
| DN     | ØA            | CH2 | L2    | ØD | L      |
| 10     | 1/4" BSP      | 22  | 66,5  | 31 | 99,07  |
|        | 1/4" NPTF     | 22  |       |    |        |
|        | 3/8" BSP      | 22  |       |    |        |
|        | 3/8" NPTF     | 22  |       |    |        |
|        | M16x1,5       | 22  |       |    |        |
|        | M18x1,5       | 22  |       |    |        |
| 13     | 3/8" BSP      | 27  | 37,80 |    | 113,80 |
|        | 1/2" BSP      | 27  |       |    | 113,80 |
|        | 3/4" NPTF     | 30  |       |    | 117,80 |
|        | M14x1,5       | 27  |       |    | 113,80 |
|        | M16x1,5       | 27  |       |    | 113,80 |
|        | M18,1,5       | 27  |       |    | 113,80 |
|        | M22x1,5       | 27  |       |    | 117,80 |
|        | 3/4" -16ORB   | 27  |       |    | 113,80 |
|        | 7/8" -14ORB   | 27  |       |    | 113,80 |
|        | * 3/4" -16ORB | 27  |       |    | 83     |

\* DN13 FEMALE drawing

### STANDARD FEMALE MODELS

| DN | ØA            | REF.         |        |
|----|---------------|--------------|--------|
| 10 | 1/4" BSP      | 107.12112AB  | 270Bar |
|    | 1/4" NPTF     | 107.12112BB  |        |
|    | 3/8" BSP      | 107.12112AC  |        |
|    | 3/8" NPTF     | 107.12112BC  |        |
|    | M16x1,5       | 107.12112ND  |        |
|    | M18x1,5       | 107.12112NE  |        |
| 13 | 3/8" BSP      | 107.12113AC  | 250Bar |
|    | 1/2" BSP      | 107.12113AD  |        |
|    | 3/4" NPTF     | 107.12113BE  |        |
|    | M14x1,5       | 107.12113NC  |        |
|    | M16x1,5       | 107.12113ND  |        |
|    | M18,1,5       | 107.12113NE  |        |
|    | M22x1,5       | 107.12113NG  |        |
|    | 3/4" -16ORB   | 107.12113GF  |        |
|    | 7/8" -14ORB   | 107.12113GH  |        |
|    | * 3/4" -16ORB | 107.12113GFA |        |

\* This reference is habitually provided in the Spanish market, being the head cylindrical instead of 27mm hexagonal.



# 107 SERIES

## PSM PLUGS & CAPS



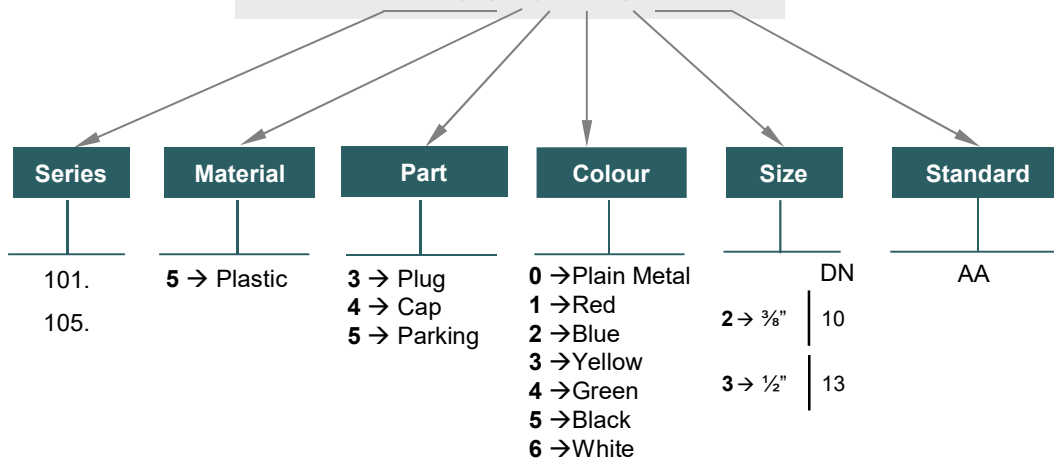
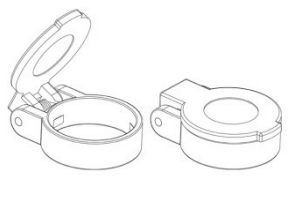
PSM SERIES PLUGS/CAPS have been designed to protect FEMALE (coupler) or MALE (nipple) parts while they are disconnected.

### MODEL STRUCTURE


For plugs/caps and parking parts

Example:


## 105.5413 AA

| CAP |            |      |        |       |       |       |
|-----|------------|------|--------|-------|-------|-------|
| DN  | RED        | BLUE | YELLOW | GREEN | BLACK | WHITE |
| 10  | 105.5412AA | *    | *      | *     | *     | *     |
| 13  | 105.5413AA | *    | *      | *     | *     | *     |



| PLUG |            |      |        |       |       |       |
|------|------------|------|--------|-------|-------|-------|
| DN   | RED        | BLUE | YELLOW | GREEN | BLACK | WHITE |
| 10   | 101.5312AA | *    | *      | *     | *     | *     |
| 13   | 101.5313AA | *    | *      | *     | *     | *     |



| CAP |            |      |        |       |       |       |
|-----|------------|------|--------|-------|-------|-------|
| DN  | RED        | BLUE | YELLOW | GREEN | BLACK | WHITE |
| 10  | 101.5412AA | *    | *      | *     | *     | *     |
| 13  | 101.5413AA | *    | *      | *     | *     | *     |

\* Other colors available upon request.

